

# Manual for panel COM/NAV software by FSCockpit.eu

Shortcuts:

RMP-Radio Management Panel/panel COM/NAV, FS – Flight Simulator

## Attention!!!

Operating system Windows XP (and earlier) has not built-in drivers for FTDI chip, which is the „heart” of our panel. If our panel, after connecting to the computer by USB, does not display horizontal lines - you have to download this file: [http://ftdichip.com/Drivers/CDM/CDM20802\\_Setup.exe](http://ftdichip.com/Drivers/CDM/CDM20802_Setup.exe), install it and restart the operating system.


## Software installation

For the last version both the software and manual visit: <http://fsc cockpit.eu/suport.php>

Run file **fsc cockpit.eu.engine.setup.msi**, choose destination Folder. The setup program will check version of your **.net Framework**, which is necessary for the proper operation of the program **fsc cockpit.eu.engine**. If you don't have at least **.net Framework 2.0** installed, you will be redirect to the website where you can download. net Framework, Version 3.5 (the file size is 71MB).

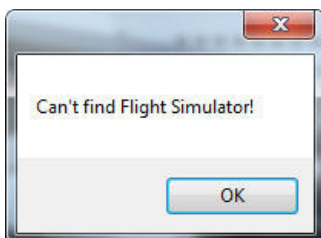
To install **.net Framework** just follow the instructions on the page.

## Running the Program and Panel Configuration

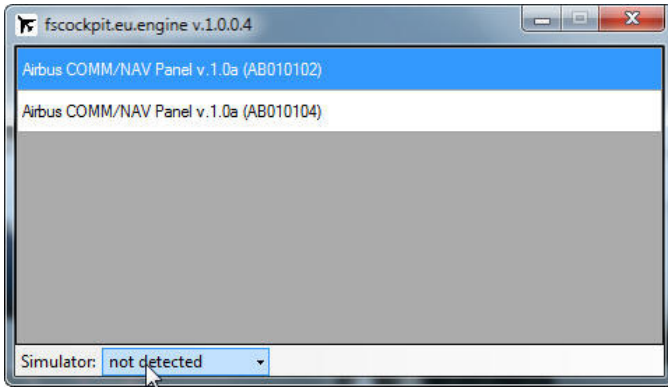
Start **fsc cockpit.eu.engine** program by clicking the icon  on the desktop.

The program can be run on a computer with FS (FSUIPC program is required - can be unregistered), or on a computer running WideFS (requires registered FSUIPC and WideFS Server program on the FS computer)

First, you have to start your Flight Simulator (FS) main program, then start **fsc cockpit.eu.engine** program. If the FS is not detected, you will see the following window:



then, after clicking 'OK' you will see:

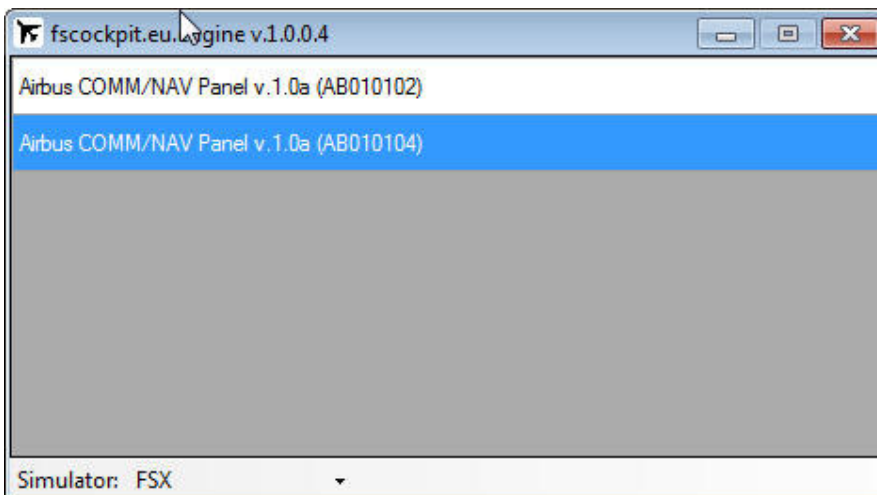


If the Flight Simulator is not running, RMP will display horizontal bars instead of the frequency in ACTIVE and STBY windows:

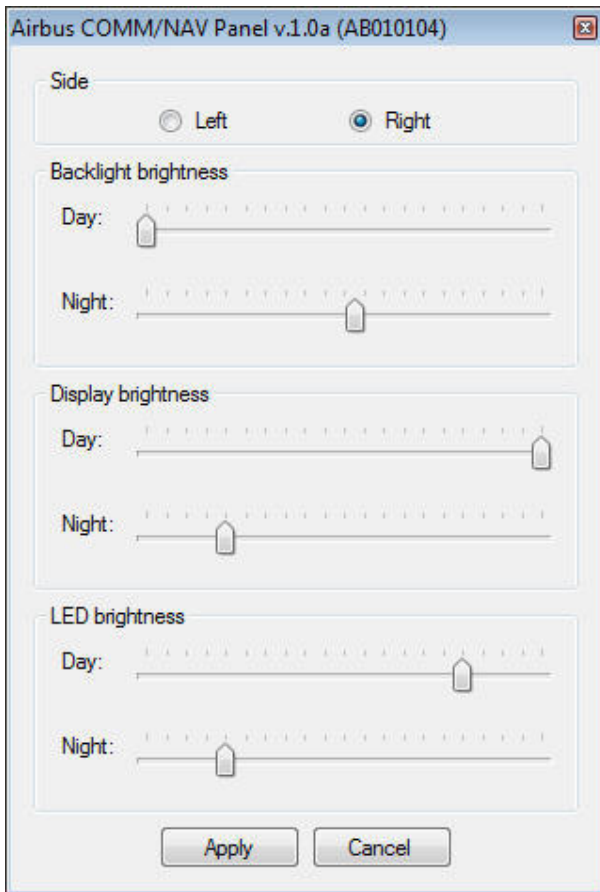


Restart your Flight Simulator program and then click the LMB (left mouse button) on the word 'not detected' to select the correct FS version (FS2004 or FSX).

A properly run program, under the FSX should look like this:



In the main window, you can see a list of detected RMP and their serial numbers. When you move the cursor over RMP, you will see a hint 'Right click the configure panel'. By clicking the RMB (right mouse button) you can select the option 'Configure ...' and the pop-up window will appear:



Looking at the top, choose whether it is the Captain's RMP (Left) or Flight Officer's (Right). It will result in the RMP setting - either that of Captain's (VHF1) or that of the Flight Officer's (VHF2). Captain's RMP always sets a VOR1 and Second's officer VOR 2 (\*). Frequencies VHF1 and VHF2 can be freely interchangeable between the panels.

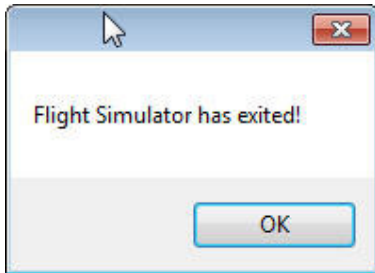
The next option is the intensity of the brightness sliders:

- Panel Backlight
- Display backlight frequency ACTIVE / STBY
- LED backlight (green LEDs next to the keys)

Each of these three settings, has two variants 'day' and 'night'. You can switch between these settings using the standard FS keyboard shortcut 'Shift' +

(\* )Some add-on aircraft such as Wilco, will automatically tune to the nearest VOR in the area. To disable the automatic tuning, manually 'input' any frequency in the MCDU, on the 'RAD NAV' page, respectively in the upper left corner VOR1 (NAV1) and in the upper right corner VOR2 (NAV2)

After closing the Flight Simulator, a window will appear to inform user that connection has stopped.




After clicking "OK." **fsc cockpit.eu.engine** program goes into Sleep Mode.

The icon  can be found:

- in the lower right corner of the desktop

or

- hidden in the system tray, in case of which, click on the button 'Show hidden icons'

Click on the icon  with RMB (right mouse button), select 'Reconnect' - the program will attempt to recall the last connection, or click 'Show', and after viewing the application's main window, re-select FS versions in the bottom left corner.